

❖ 3/8 Check and Throttle Modular Valves

❖ Ratings

Max. Operating Pressure kgf/cm ²	Max. Flow l/min
250	70

Note: Maximum flow decreases when the differential pressure is less than 8 kgf/cm². See "Pressure Drop at Throttle Fully Open".



❖ Model Number Designation

F	MSCP	-03	-H	-10
Special Seals	Series Number	Valve Size	Differential Pressure Range kgf/cm ²	Design Number
F: Special Seals for Phosphate Ester Type Fluids (Omit if not required)	MSCP: Check and Throttle Modular Valves for P-Line	03	L: Pressure Difference 5~50 H: Pressure Difference 50~250	10

Graphic Symbol

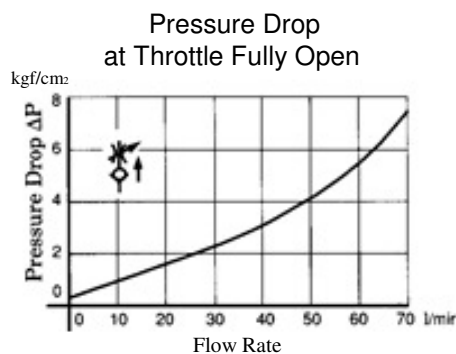
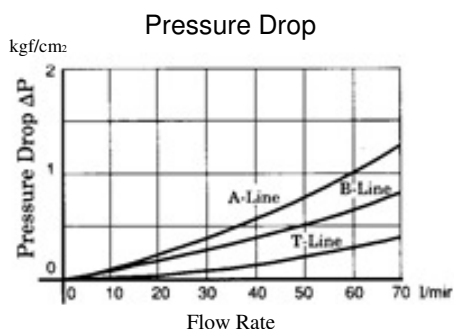


Detailed Graphic Symbol

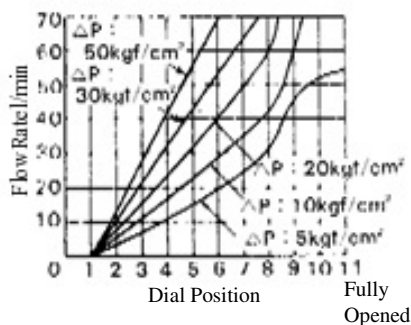


❖ Typical Performance Characteristics

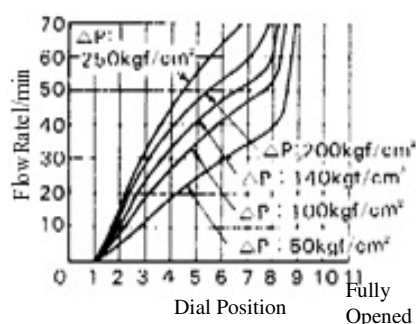
Hydraulic Fluid: Viscosity 35cSt (160SSU), Specific Gravity 0.850



Flow Vs. Dial Position
MSCP-03-L
(Δ P: Low Differential Pressure)



Flow Vs. Dial Position
MSCP-03-H
(Δ P: High Differential Pressure)

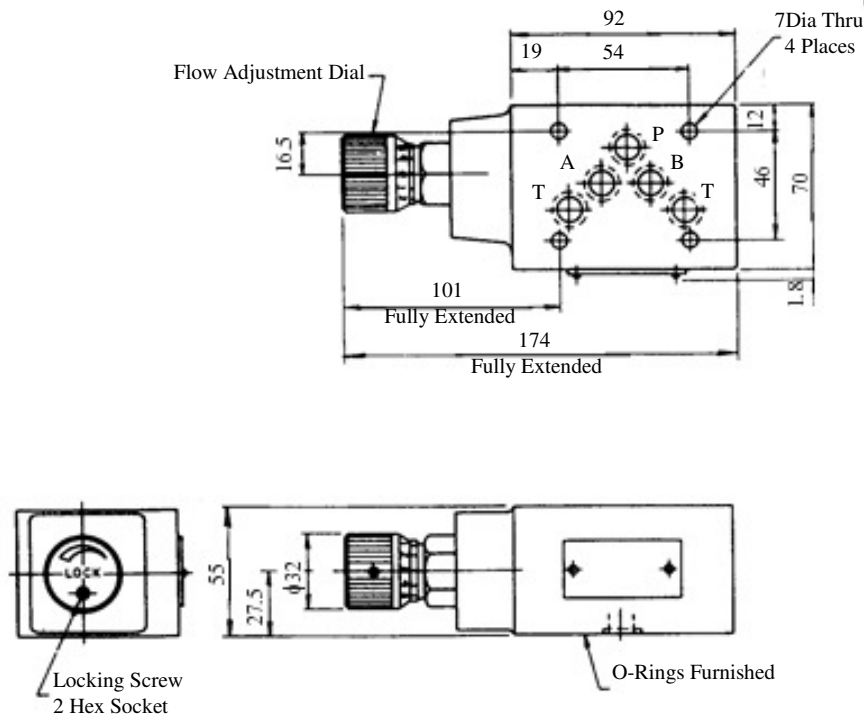


❖ Instructions

■ To make flow rate adjustment, loosen locking screw for the dial and turn the flow adjustment dial clockwise or anti clockwise. For a decrease of flow, turn the dial clockwise. Be sure to re tighten the locking screw firmly after the adjustment of the flow rate.

MSCP-03-✱-10

DIMENSION IN
MILLIMETRES



Mass... .3.0kg